

CERTIFIED LAND CORNER RECORDATION

LOCATION

DESCRIPTION OF CORNER EVIDENCE FOUND, AND ORIGINAL RECORD (if known)

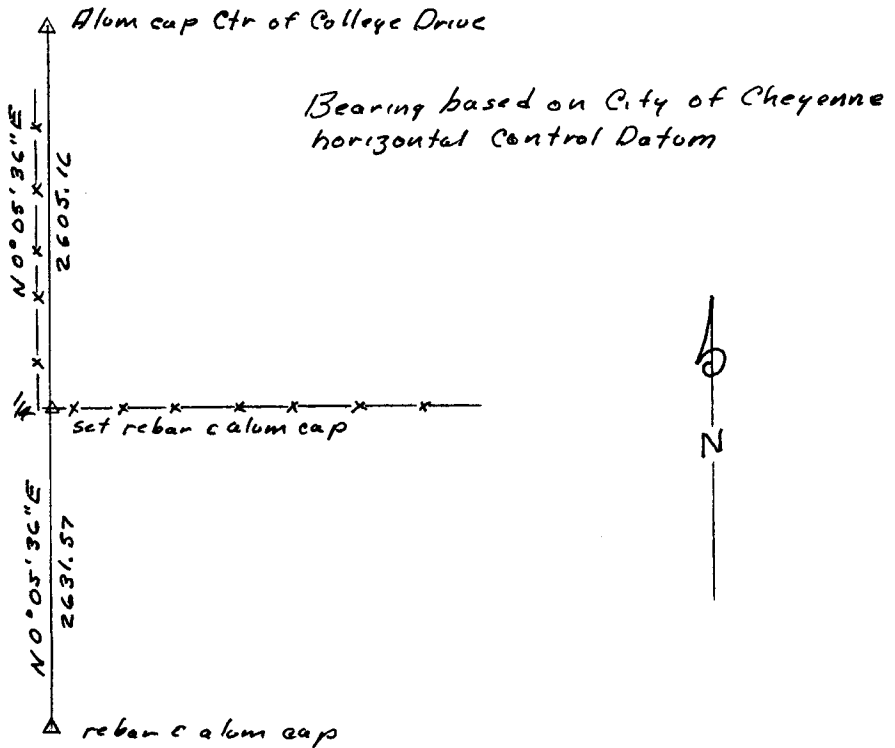
1/4  
S13 S18  
T13N  
R67W R66W  
6th P.M

found marked stone laying in fence line approx 30' East

DESCRIPTION OF MONUMENT AND ACCESSORIES ESTABLISHED TO PERPETUATE THE ORIGINAL LOCATION OF THIS CORNER:

Set 9/8" rebar with alum. cap approx 3' east of fence corner  
Corner set by intersection of monumented south line of Capitol Tracts and east line of Sec. 13 between found corners

SKETCH, WITH COURSE AND DISTANCE TO ADJACENT CORNER IF DETERMINED IN THIS SURVEY. (May Sketch or Paste Reproduction on Reverse Side.)



I, Francis J. Thornton certify that I have carefully performed or reviewed the work done on the diagrammed corner as reported on this recordation form and approve the same.

Francis J. Thornton Wyo 333 PEELS  
Signature of Surveyor Registration No.

STATE OF WYOMING,  
Office of Clerk and Recorder,  
County of Taiwanee

# 774539

This "corner record" was filed for record on the JAN 8 1985 day of 1985, 1985, was noted on the cross-index plat and is assigned page No.         , in book No.         .

L-1  
T13 R66  
L-25  
T13 R67

James C. Whitehead  
County Official  
Cross Index No. L-1 T. 13 R. 66 Mer.  
L-25 T. 13 R. 67 Mer.  
\_\_\_\_ T. \_\_\_\_\_ R. \_\_\_\_\_ Mer.  
\_\_\_\_ T. \_\_\_\_\_ R. \_\_\_\_\_ Mer.  
\_\_\_\_ T. \_\_\_\_\_ R. \_\_\_\_\_ Mer.  
\_\_\_\_ T. \_\_\_\_\_ R. \_\_\_\_\_ Mer.  
\_\_\_\_ T. \_\_\_\_\_ R. \_\_\_\_\_ Mer.